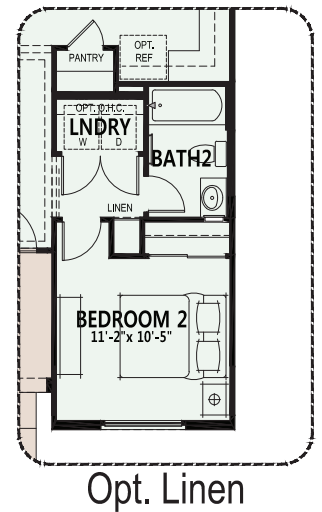
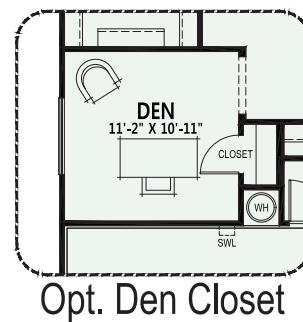
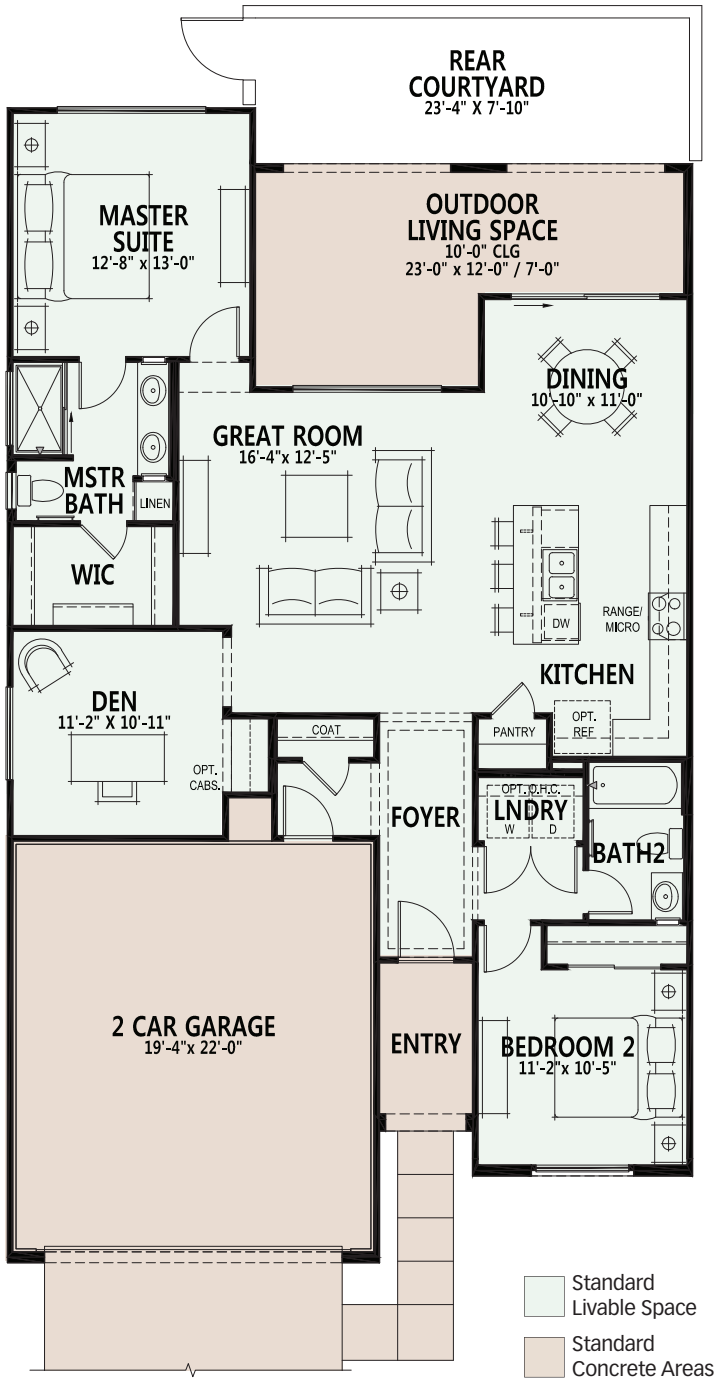


Cholla 1,399 sq. ft.

Courtyard Villa Series

Quail Creek

- 2 Bedrooms, 2 Baths
- Great Room
- Dining Area
- **Now Included** - Granite Kitchen Countertops
- Large Kitchen Island
- Step-in Pantry
- Spacious Den
- Walk-In Closet in Master Suite
- Deep 2-Car Garage
- 276 sq. ft. Outdoor Living Space
- Enclosed Courtyard w/Gate approx. 182 sq. ft



Quail Creek

A ROBSON RESORT
COMMUNITY™

520.648.0332 · robson.com



2020
Gold Winner
Best of 55+
Housing Awards

Go to robson.com for the latest floorplan updates.

Please review the CC&R's for the Villas regarding details for home exterior, landscaping & common areas maintenance. All information is subject to change without notice. We reserve the right to discontinue or change specifications at any time. Promotional materials may show features, options, upgrades or improvements that are only available at additional cost and that are not included unless specifically provided for in the purchase contract. All dimensions and measurements, including without limitation square footages, ceiling heights and window sizes, styles and locations, are approximate and may vary per elevation and floor plan. Measurements in model homes may vary slightly without incurring any obligation or liability. Lot size is approximate and is typical for that home series within the community. Actual lot sizes and home measurements will vary. Lot size and actual position of the home on the lot will be determined by the site plan and final plot plan based upon the particular home and lot selected. Interior and/or exterior photos or illustrations of models may have been taken at other Robson Resort Communities®, are artist's conceptions and are not intended to show specific detail for homes at any particular Robson Resort Community™. Many options are available and will vary per floor plan. Check with your New Home Consultant. The housing at any Robson Resort Community™ is intended for occupancy by at least one person 55 years of age or older per dwelling unit, although the occupants of a limited number of dwelling units may be younger. One person must be at least 40 years of age in each unit. No one in permanent residence under 19 years of age. Homes are offered and sold by Robson Ranch Quail Creek, LLC, owner/agent. Robson Ranch Arizona Construction Co, general contractor, ROC 192584. No offer for sale or lease may be made or accepted prior to buyer's receipt of an Arizona subdivision public report. A public report is available on the Arizona state real estate department's website. This material shall not constitute an offer in any state where registration is required or if in violation of law. Effective date 8/23/23. All photos/pictorials are artist's conception. © 2023 Robson Communities®, Inc. All rights reserved.